



WWW.HPHPARTNERS.COM

DRAUPNIR



Shane Hampton 630-460-4953
shampton@hphpartners.com

Derek Larson 541-806-4484
derek@draupnir.us

FUTURE-PROOFED NETWORK



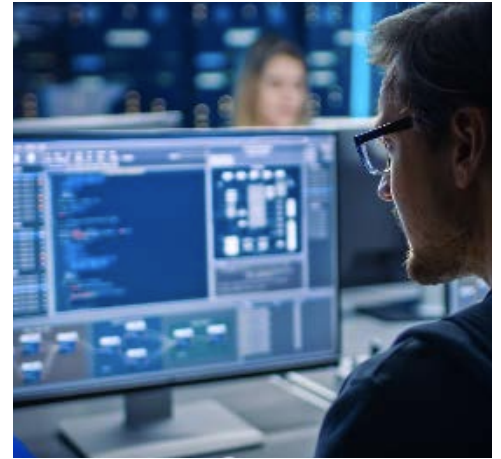
The Network

With a network 100% underground, 100% owned locatable plant, and no shared vaults our network is built with network protection and quality in mind. Our state of the art, ultra high-density ribbon fiber gives Draupnir the ability to scale to all customer requirements.



The Products

Our network is built with trusted and proven utility construction and engineering vendors with a history of performing. The network itself is built with industry leading products and partners. Including AFL Global fiber, Dura-Line conduit, Old Castle Infrastructure, Commscope, and others used by leading infrastructure networks.



The Customers

Data Centers, Internet Service Providers, Wireless Service Providers, Government /Municipalities, and anyone looking for fiber optic presence in the booming Quincy Data Center Market. The Quincy data center market provides multiple route options interconnecting data centers, and its customers, as they continue rapidly expanding and relocating to Eastern Washington.

QUINCY, WASHINGTON

A superior network, made with superior products, for our superior customers.

- DARK FIBER LEASING
- BUILD TO SUIT



DRAUPNIR



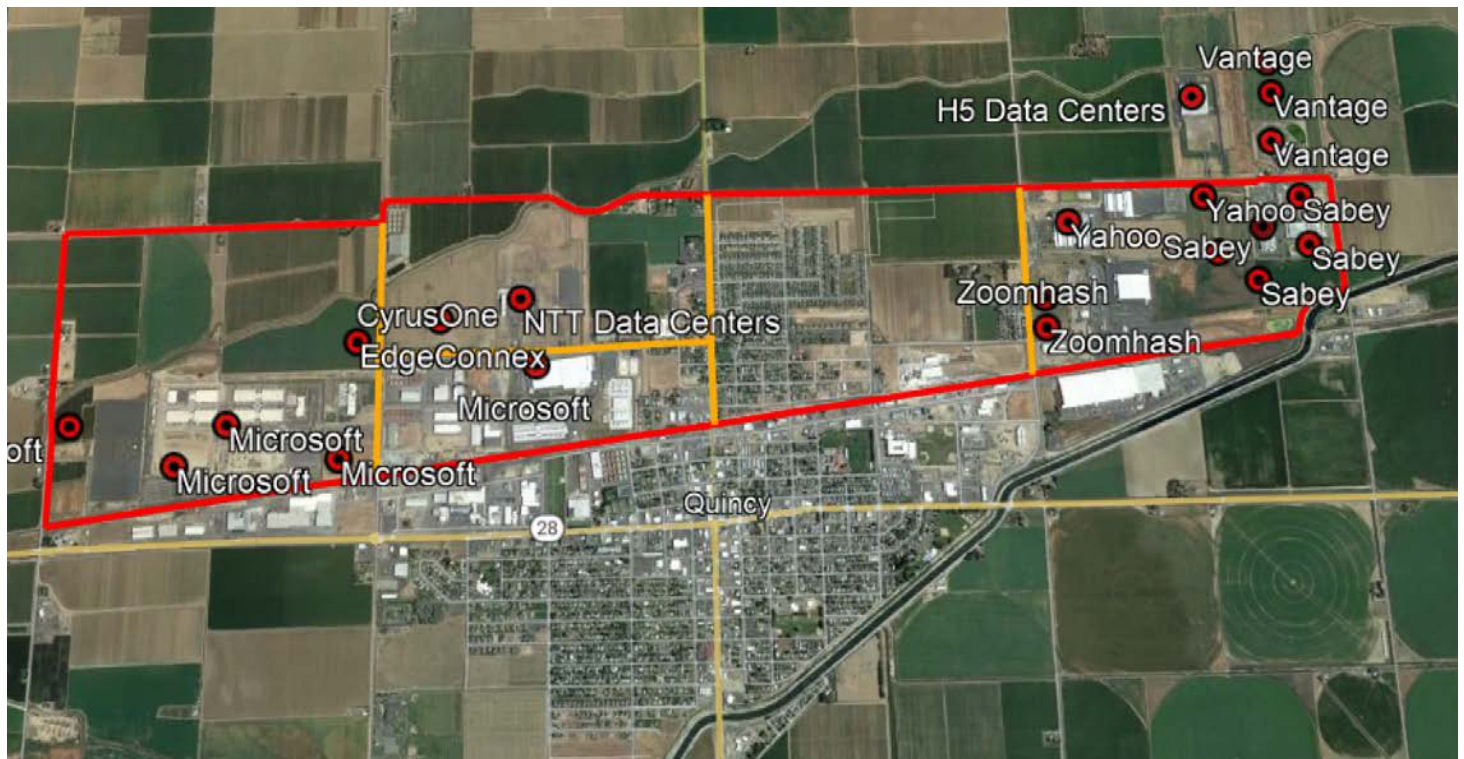
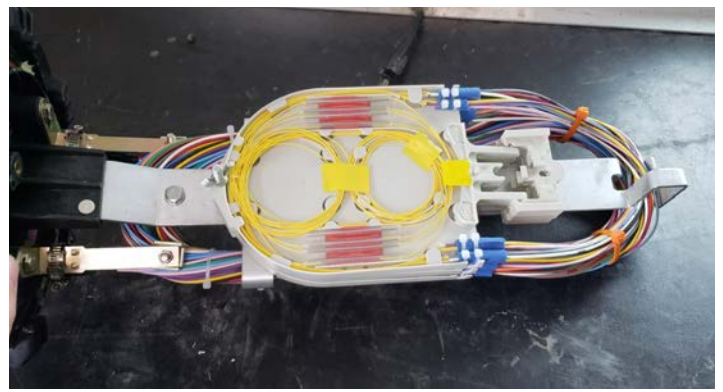
OUR SERVICES

Dark Fiber Leasing

Available to our customers in a wide range of agreement options including short term, long term, high volume and low volume. Draupnir.us is here to support your connectivity needs with a network built to the highest standards of quality with future proof capacity in mind and a presence in or near all major data centers in the Quincy, Washington market. Our specialty is interconnecting data centers and are your ideal partner for fiber leasing needs.

Build To Suit (BTS) Projects

The customer is always right, whatever is requested, we can build to accommodate specific route or redundancy requirements outside of the existing network design. Specific conduit packages, fiber counts, separation from other entities, and other customer requirements can be accommodated based on customer needs.



QUINCY, WASHINGTON

INTERCONNECTING:

MSFT, SABEY, EDGECONNEX, CYRUSONE, H5, NTT, VANTAGE, YAHOO, DELL, NOANET, FRONTIER AND ALL CARRIERS IN QUINCY AND EASTERN WASHINGTON

Network Protection Personnel:

Actively monitor OSP fiber routes, meets with contractors, entities that are working nearby. On site when facilities are exposed for utility/construction crossings. This also entails joining utility coordination meetings with entities on future projects, keeping us up to date on upcoming work

LMS Monitoring:

(Least Mean Square) System that monitors fiber and immediately notifies us if a new reflective event takes place.

The entire secure network is underground

